

Service Oriented Architecture at Sabre

John MacDonald

Principal, Integration Services
OpenTravel Advisory Forum, April 2007

Sabre Enterprise Evolution

Yesterday

- 2-tier Architecture
- Content Access
 - Screen Scraping
 - API's
- No Off-host Infrastructure Services
- Auth Requests Handled by Host (PSS)
- Connection Based
- Inconsistent Instrumentation
- No Operational Data Off-host

Today

- Services Interface
 - Web Services
 - CORBA
- Services Architecture
- Core Services for Open Systems Users, Interoperable with Legacy (Security, Etc.)
- Migration Path for Legacy Users
- Session Based
- Standards for Instrumentation and Tools

Tomorrow

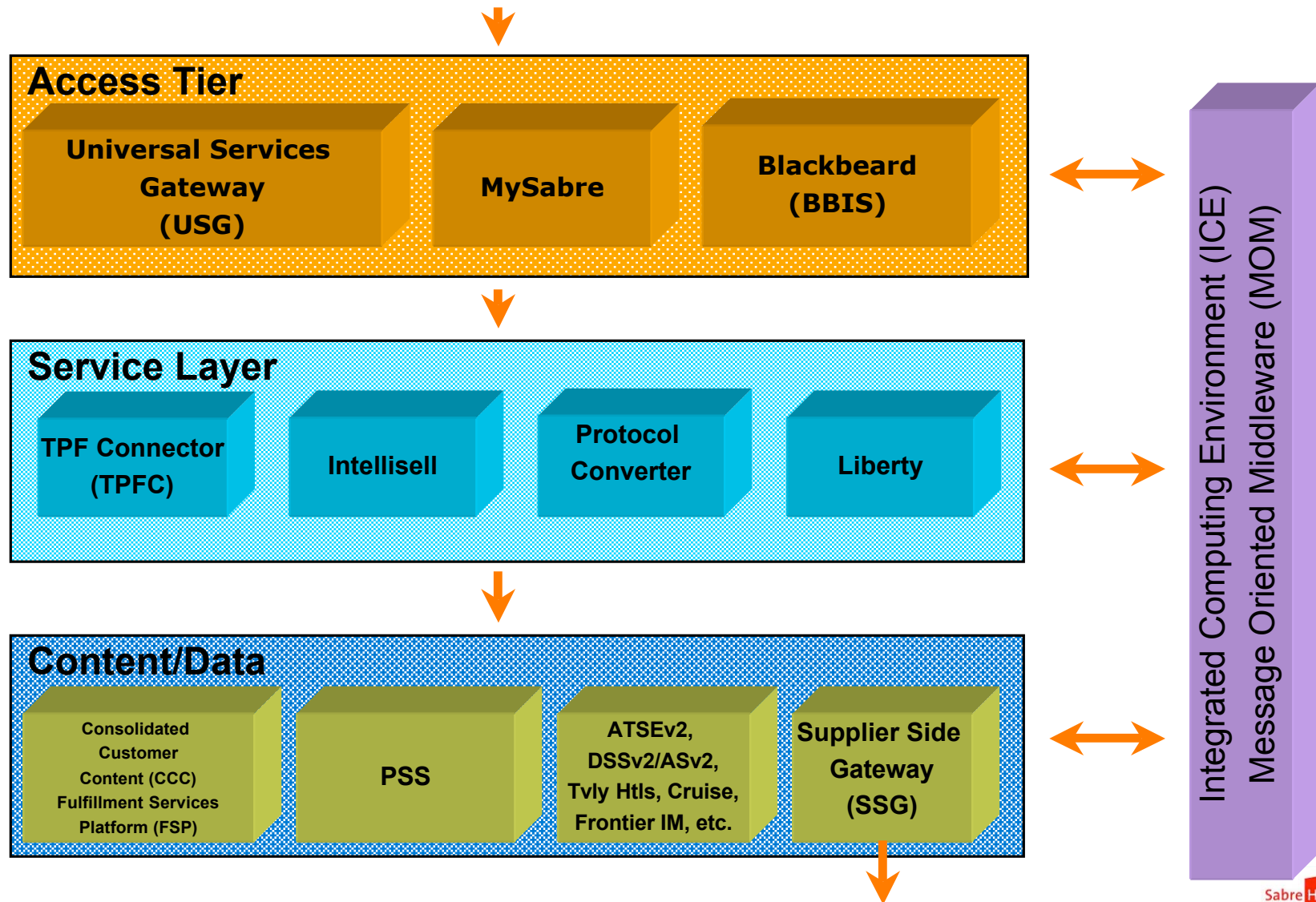
- Service Oriented Architecture (SOA)
- Federated Infrastructure
- Cookie-cutter Architecture
 - Standard Hardware
 - Standard Software
- Evergreen Migration Path

1961 - 2001

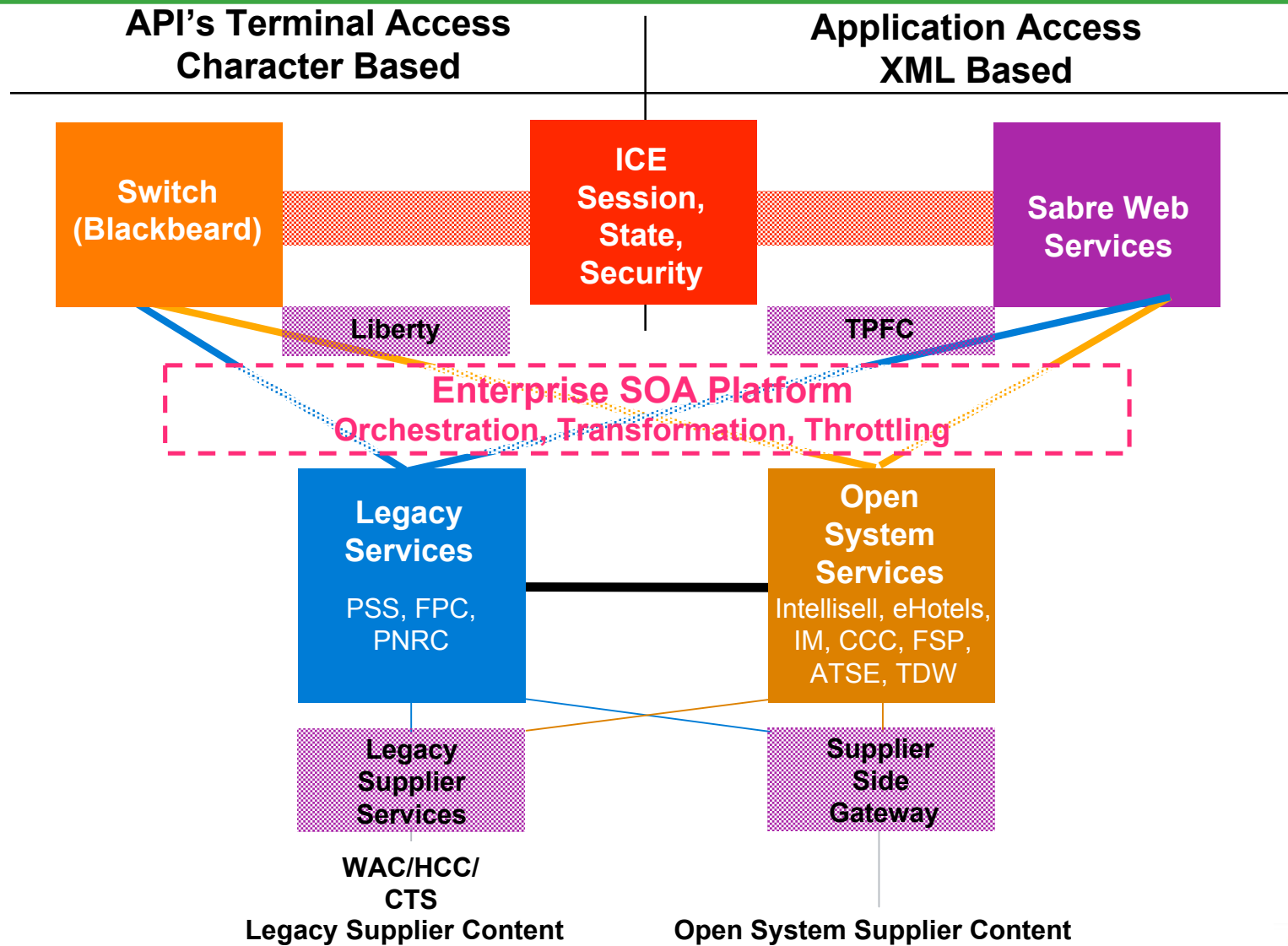
2002 - 2007

2008 - 2009

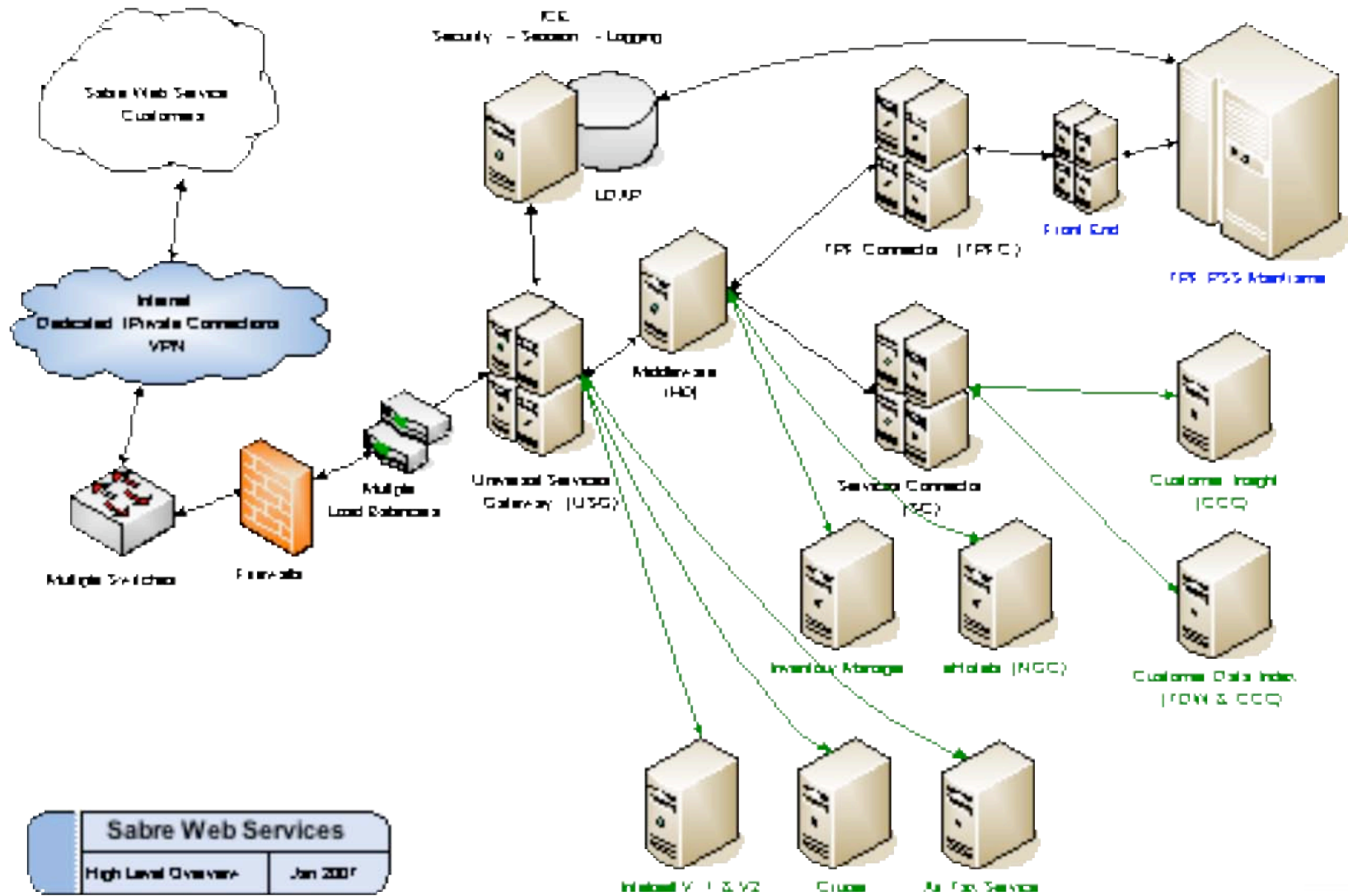
Sabre Component Model



Sabre Access

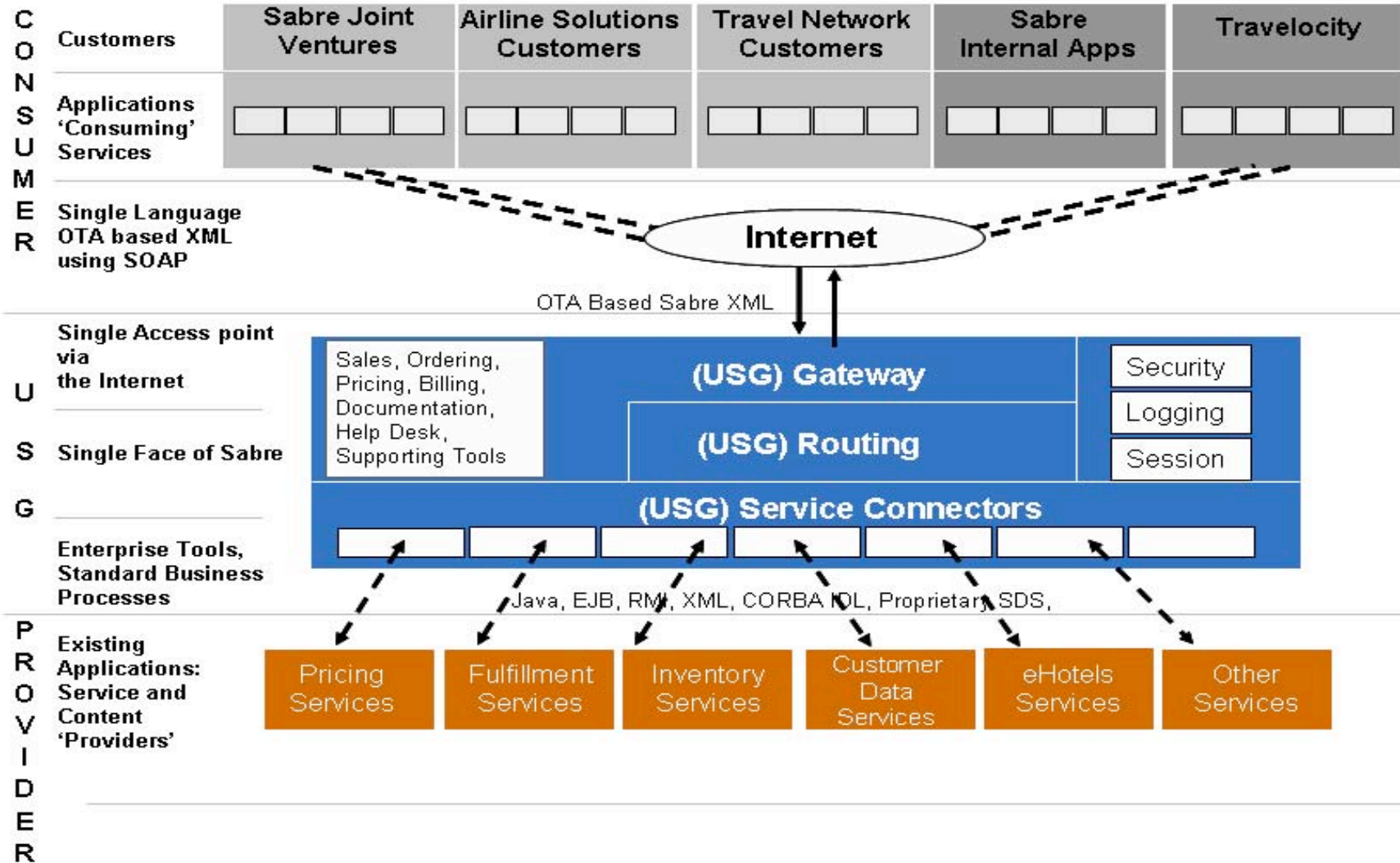


Sabre Web Services Architecture



Sabre Web Services
High Level Overview Jan 2007

High Level Service Architecture

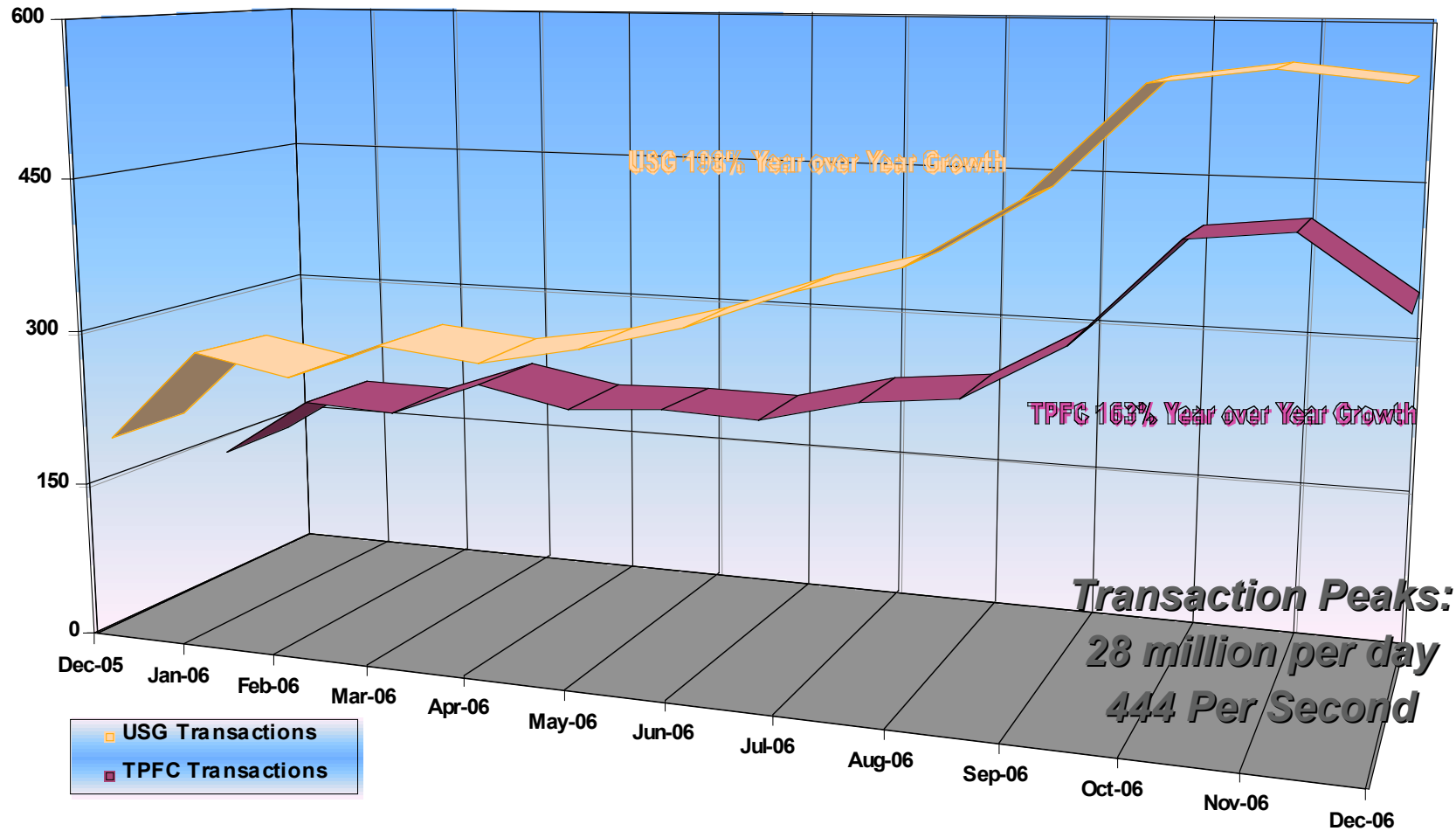


Sabre Web Services Statistics

- **8 Sabre Airline Solutions Customers Have Subscribed to Sabre Web Services for Their Consumer Web Sites with More in Development**
- **1,200+ Sabre Travel Network Customers Consume Sabre Web Services**
 - Over 500 New Customers Added In 2006
- **Major On-line Agencies Utilizing Sabre Web Services**
 - Travelocity, Lastminute.Com, Site59, Expedia, Priceline, and others
- **20+ Internal Efforts In Production**
 - Sabre Cruises, Agency Merchant Processing, Etc.
- **Sabre Web Services In Production Today**
 - 65+ External Facing Web Services
 - 90+ Internal (Restricted) Services
- **Numerous Internal Projects to Expose Applications and Content Via Web Service Access**
- **Public-facing Open Systems Services (“Host Bypass”)**

Sabre Web Services Statistics

Transaction Volume, per Month, 13 Month Trend



SOA Reliability

SWS & ICE Availability Stats - Past 13 Months

